



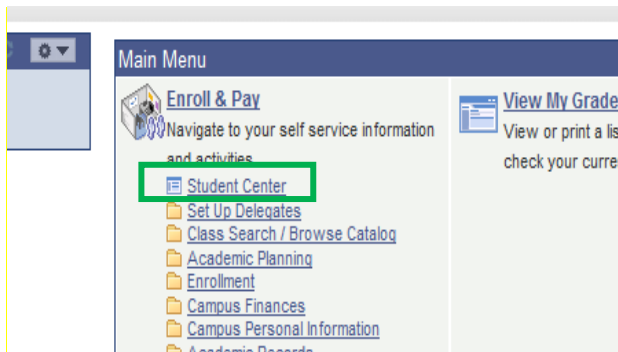
# Go Army Ed Tuition Assistance

## Documents to submit to the Go Army Ed portal

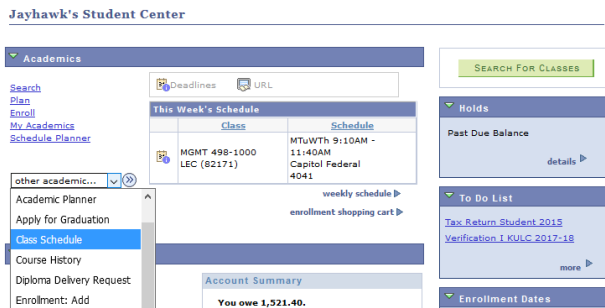
When requesting Tuition Assistance through the Go Army Ed portal, there are two documents you need to submit per term: 1) Schedule of classes and 2) Charges due. Please see the information below for finding these documents.

### Schedule of Classes

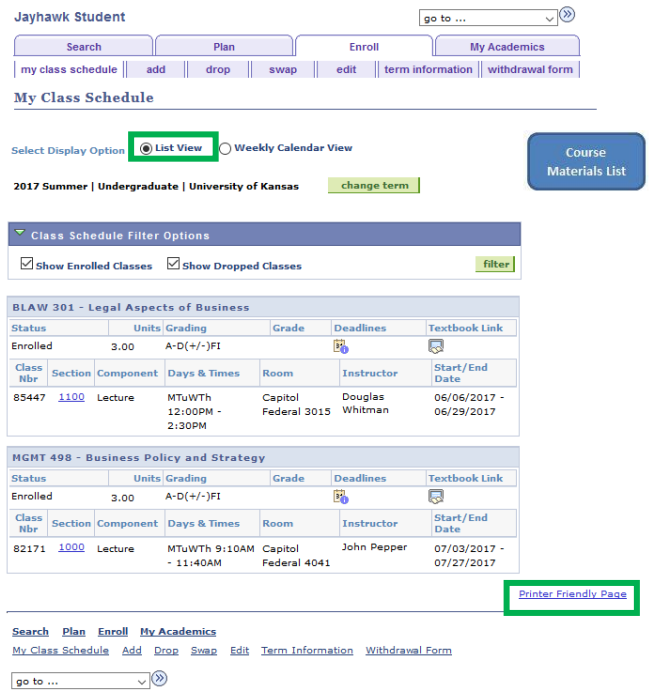
1) Log into your Enroll and Pay account and from the homepage, navigate to your "Student Center" page.



2) From the drop-down menu on the left, select the "Class Schedule" option.



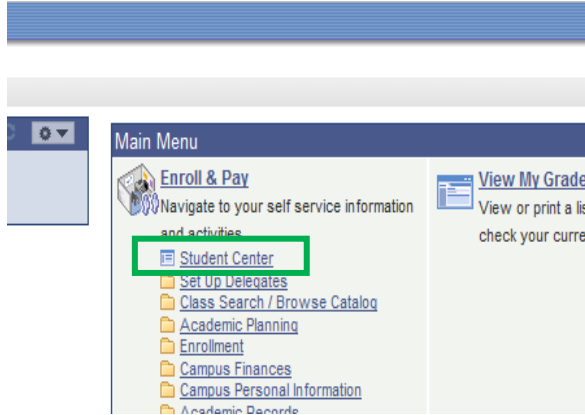
3) At the top of the page, select "List View". If there are multiple terms, select the appropriate term for which you are requesting TA. Select "Printer Friendly Page" at the bottom, save this page, and upload it to the Go Army Ed portal.



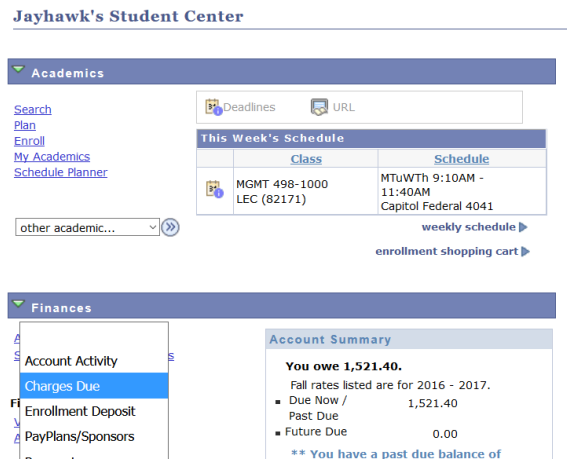


# Charges Due

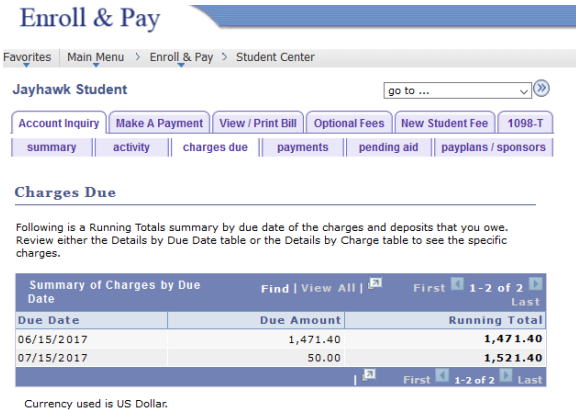
1) Log into your Enroll and Pay account and from the homepage, navigate to your "Student Center" page.



2) From the drop-down menu on the left, select the "Charges Due" option.



3) Below is the page you will need to save and upload to the Go Army Ed portal. Note: there may be multiple terms to select on this page, be sure to have the term for which you are requesting TA selected.



Due Date	Due Amount	Running Total
06/15/2017	1,471.40	1,471.40
07/15/2017	50.00	1,521.40

Charge	Due Date	Term	Amount
Tuition In-State Ungrad	06/15/2017	2017 Summer	401.80
Technology Fee	06/15/2017	2017 Summer	60.00
Required Infrastructure Fee	06/15/2017	2017 Summer	12.00
Required Campus Fee	06/15/2017	2017 Summer	239.80
Business Tuition - Course Fee - Business Policy and Strategy	06/15/2017	2017 Summer	378.90
Business Tuition - Course Fee - Legal Aspects of Business	06/15/2017	2017 Summer	378.90
Late Payment Fee - 1	multiple	2017 Summer	50.00
<b>Total due for this view</b>			<b>1,521.40</b>
<b>Total due</b>			<b>1,521.40</b>

Questions?  
kuva@ku.edu  
785-864-4422

www.veterans.ku.edu  
www.registrar.ku.edu

